



# 7" Handheld Android POS System: AMT-B700

Reliable Brings You Business!!



### FEATURE

#### 7" Handheld Android POS System Payment Enabled

- \* Rugged POS Tablet
- \* IP54 Rating
- \* 1.2-Meter-Drop Proof
- \* Android 4.x OS
- \* 7" TFT Color Display
- \* Capacitive Touch (Gorilla Glass)
- \* Supported Payment Features (PCI PED 3.x/EMV Contact L1)
- \* Professional Bar Code Reader Support



1.Expansion Kit - BCR (Barcode Reader)



2.I/O Functions - Pogo PIN Link With Cradle + Mini USB + Fingerprint



3.I/O Functions - Type A USB + HDMI + BCR + Audio Jack



4.Payment Enabled Function



5.Payment Enabled Functions NFC Usage



6.Payment Enabled Function Smart Card Reader Usage



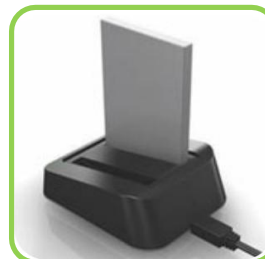
7.Payment Enabled Function MSR Usage



8.Accessory Handbelt Design



9.Accessory Charging Cradle



10.Accessory Battery Charger



11.Accessory Car Charger

### SPECIFICATION

Model No.	AMT-B700
Main Unit	
Durability	1.2m Drop Proof & IP54 Rating
CPU Processor	ARM Cotex-A9 Dual
Operation System	Android 4.x
Memory	1GB
Storage	8GB ; Micro SD (Up to 32GB)
Color Display	7 TFT LCD with Capacitive Touch Screen (Gorilla)
Panel Resolution & Brightness	1280 x 800 ; 350 nits
Battery	3415 mAh
Speaker	Yes
Sensors	G-Sensor ; Light Sensor ; Compass

Camera	Rear Side : 5 Megapixels (AF) Front Side : 2 Megapixels (FF)	
<b>Wireless Interface</b>		
WLAN	802.11 a/b/g/n	
Bluetooth	BT 4.0	
WWAN	3G/LTE (Optional)	
GPS	YES	
NFC	ISO/IEC21481 (NFC IP-2) Type A, Type B, FeliCa	
<b>I/O Ports</b>		
Mini USB	1	
Micro SD Card Slot	1 (Up to 32GB)	
USB 2.0	1	
HDMI	Mini HDMI	
Earphone & MIC	MIC & 3.5mm Earphone Jack + MIC In	
SIM Card Slot	1	
POGO Pin	Yes	
Fingerprint Reader (Optional)	Optional	
Buttons	Power ; Volume Up/Down ; Reset ; 3 Programable Function Keys	
Thickness	15.7 mm (Main Unit Only)	
<b>Expansion Kit - BCR</b>		
Barcode Reader	1D/2D Imager Optics Professional Barcode Reader	
<b>Expansion Kit - P</b>		
Processor	32 Bit ARM9 Processor	
Display	2" TFT 240 x 320	
Payment Certifications	PCI PED 3.x ; EMV L1, L2 (Contact Only)	
MSR	WW SKU	JP SKD
	ISO 7810/7811/7813	ISO 7810/7811/7813
	3 Track (1/2/3)	JIS1 Track 1/2 & JIS2
Smart Card Reader	ISO 7816-1/2/3 Compliant Asynchronous Card Propocol T=0, T=1 and Memroy Card (1.8V/3V/5V Avaiable)	
NFC	ISO 14443 A/B ; Mifare/Felica	
Keypad	Secure 10 Keys (0-9) 12 Numeric + Cancel, Clear, Enter	
Encryption	Algorithm: DES, 3DES, RSA Key Management: Fixed, MK/SK, DUKPT	
I/O Ports	Mini USB	
	Pogo Pin (link with PAD)	
	SD Card Slot	
	SAM Card Slot x 4	
Speaker	Yes	
Dimensions (mm)	72 x 135 x 25 mm	
<b>Accessory</b>		
Charging Cradle	Yes	
Handbelt	Yes	
Battery Charger	Yes	
Car Charger	Yes	
<b>Safety/Quality Approvals</b>		
CE		